

# **AUCTION**

## **±2.2 ACRES**

### **PRIME**

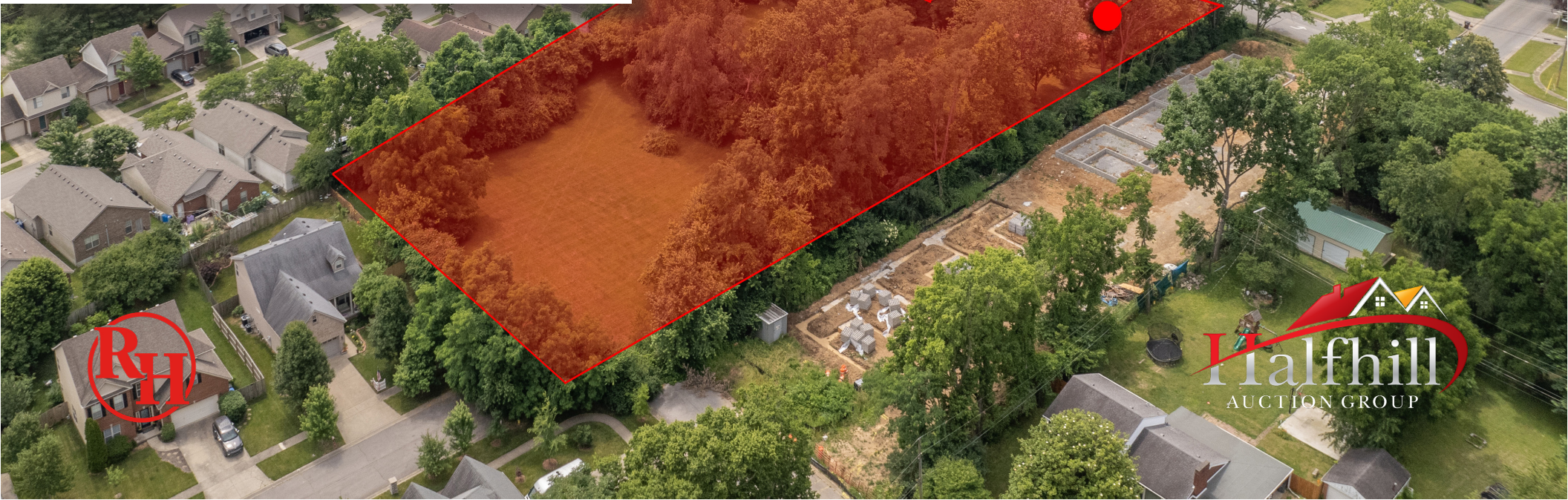
#### **DEVELOPMENT LAND**

**363 Pasadena Drive**  
Lexington, KY 40503

**Jim Halfhill**  
*Auctioneer*  
859-338-5764  
HalfhillAuctions@gmail.com

**David Snider**  
*Realtor*  
859-705-8827  
DavidSnider@rhr.com

**Subject Property**  
**363 Pasadena Drive**  
**±2.2 Acres**



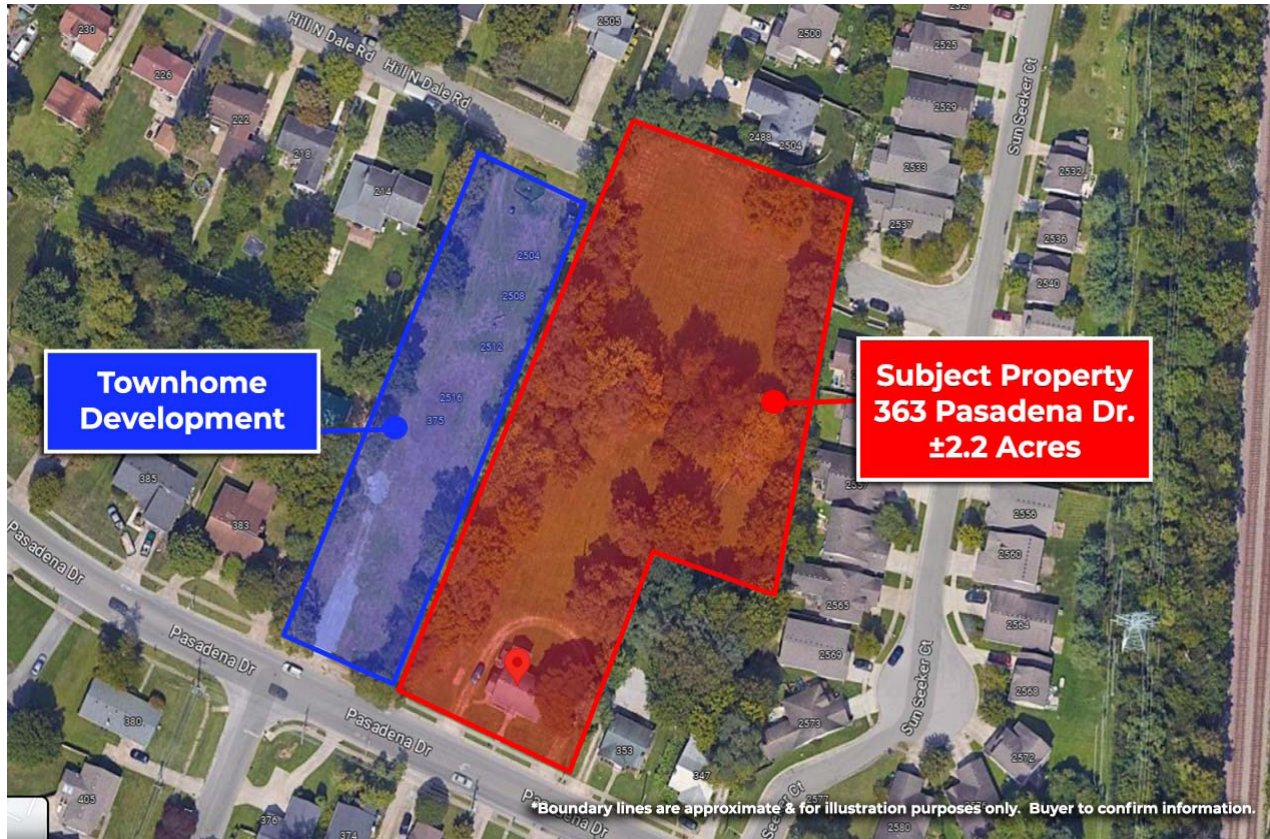


<b>SALE TYPE:</b>	AUCTION (subject to Seller confirmation)
<b>LIST PRICE:</b>	\$880,000 (list price is not a minimum)
<b>LOT SIZE:</b>	±2.2 Acres
<b>PRICE/ACRE:</b>	\$400,000
<b>ZONED:</b>	R-1C (Sngl Fam Res)

### Property Summary

**Halfhill Auction Group** along with **David Snider at Rector Hayden Realtors** is pleased to offer at Online Only Auction - 363 Pasadena Drive in Lexington, KY.

**Prime Development Land** featuring ±2.2 acres in the heart of Lexington. Property is **currently zoned R-1C** (single family residence). *Buyer is responsible for confirming possible zoning changes with the Fayette County Planning & Zoning office.* **Online bidding begins on Wednesday, July 12, 2023 at 12:00 Noon and ending on Tuesday, July 18, 2023 at 6:00PM** (bidding will have a 3-minute soft close).



## ZONING:

Property is currently zoned R-1C (single family residence). Buyer is responsible for confirming potential zoning changes with the Fayette County Planning & Zoning department.

## POTENTIAL Zoning Changes:

- R-1T - Townhouse Residential
- R-3 - Planned Neighborhood Residential

**Fayette County Planning Office:**  
Phoenix Building - 7th Floor  
101 E. Vine Street, Lexington, KY



(859) 258-3160

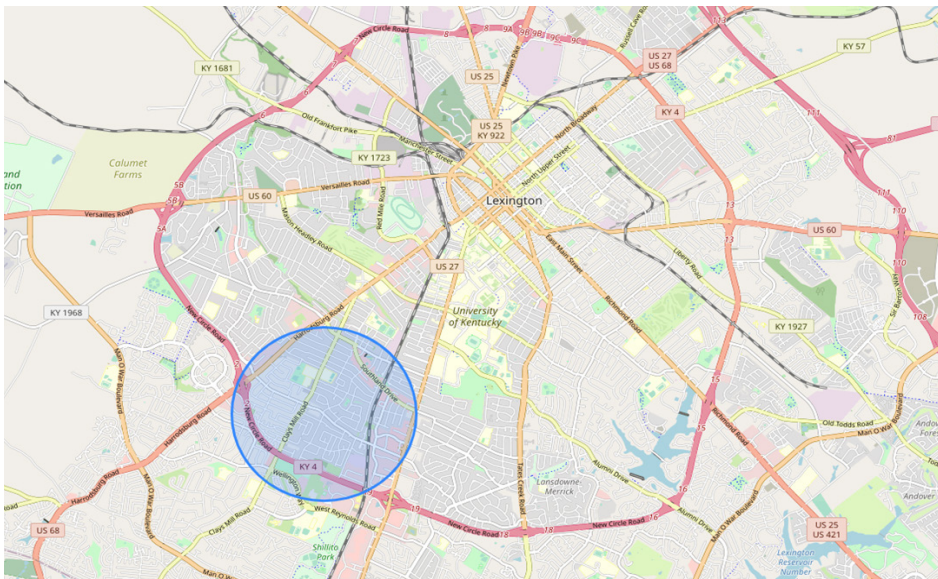


[planningmailbox@lexingtonky.gov](mailto:planningmailbox@lexingtonky.gov)



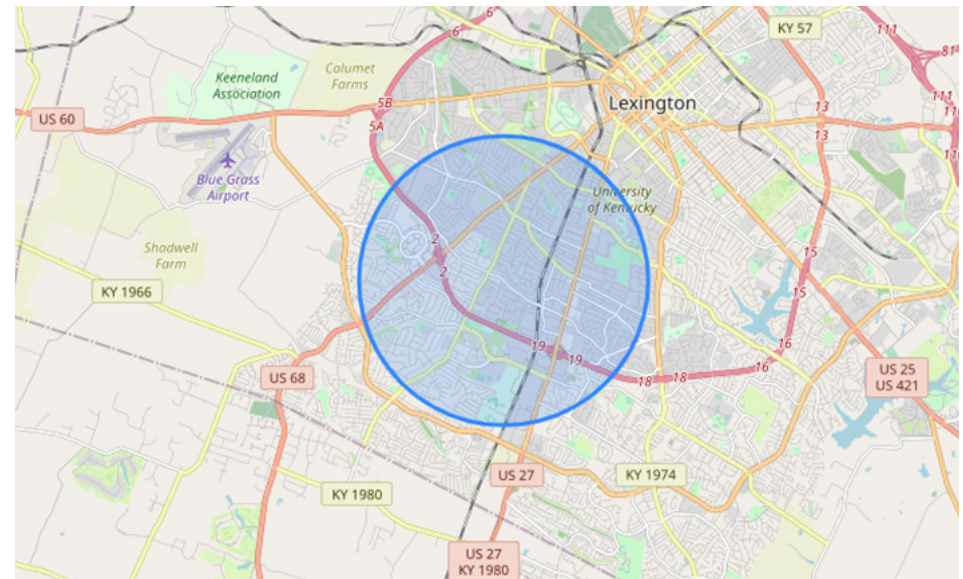
[Schedule of Zones](#)

**\*\*Buyer to confirm possible zone changes with Planning & Zoning.**



**TOTAL POPULATION - 1 MILE**

9,907



**TOTAL POPULATION - 2 MILES**

46,475

**±2.2 ACRES DEVELOPMENT LAND | LEXINGTON, KY | 363 PASADENA DRIVE**

Halfhill Auction Group at Rector Hayden Realtors