



JIM HALFHILL, SR.
 PRINCIPAL AUCTIONEER
 (859) 338-5764

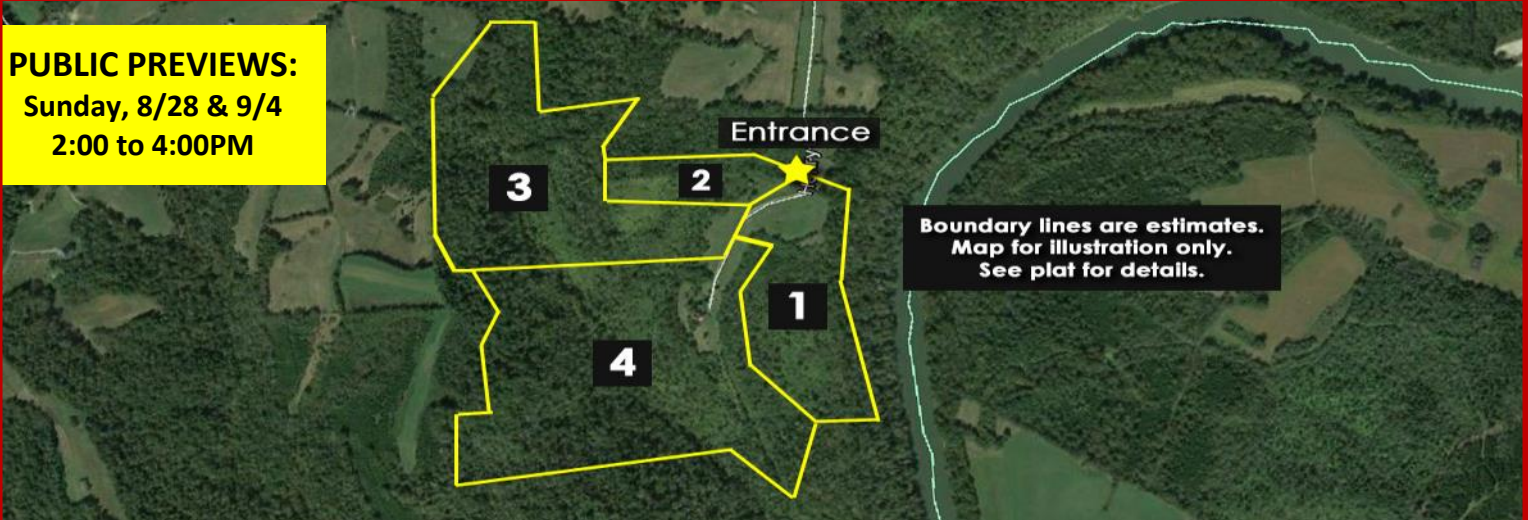


ABSOLUTE AUCTION

1999 HENRY LANE

Jessamine County - Nicholasville, KY

DATE OF SALE: Sat. September 10th @ 10:00 AM



PUBLIC PREVIEWS:
 Sunday, 8/28 & 9/4
 2:00 to 4:00PM

Boundary lines are estimates.
 Map for illustration only.
 See plat for details.

Private Getaway / Hunters Paradise / Recreational Land

120± Acres in 4 tracts in southern Jessamine County. Wildlife galore !!!

Tract 1: 21.20 acres (+/-) mostly wooded and in close proximity to the Kentucky River.

Tract 2: 7.02 acres (+/-) and has a 3 bedroom, 2 bath unfinished house with 1,700 SF (+/-).

Tract 3: 35.28 acres (+/-) with some clear land, but mostly wooded.

Tract 4: 56.92 acres (+/-) with a 3,000 SF (+/-) 1 ½ story home in excellent condition featuring 3+ bedrooms, large kitchen/family room, 3 full baths, extra large deck overlooking your ponderosa, and several outbuildings. City water and electric available to all tracts.

****Selling tracts in the multi-parcel auction style. Buy 1 tract, 2 tracts, the whole thing...your choice!****

www.HalfhillAuctions.com

Visit our website for detailed information, auction terms & conditions, and additional pictures

AUCTIONEER
JIM HALFHILL, SR.
 859.338.5764
 halfhill@rhr.com
 HALFHILL AUCTION GROUP
 at RECTOR HAYDEN REALTORS®

AUCTIONEER
JIM HALFHILL, JR.
 859.221.9373
 jhalfhill@rhr.com
 HALFHILL AUCTION GROUP
 at RECTOR HAYDEN REALTORS®

AUCTIONEER
KRISTIN LARIMORE
 859.333.1855
 khalfhill@rhr.com
 HALFHILL AUCTION GROUP
 at RECTOR HAYDEN REALTORS®