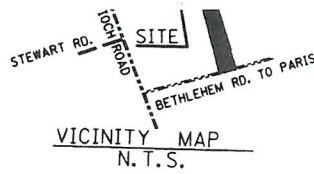


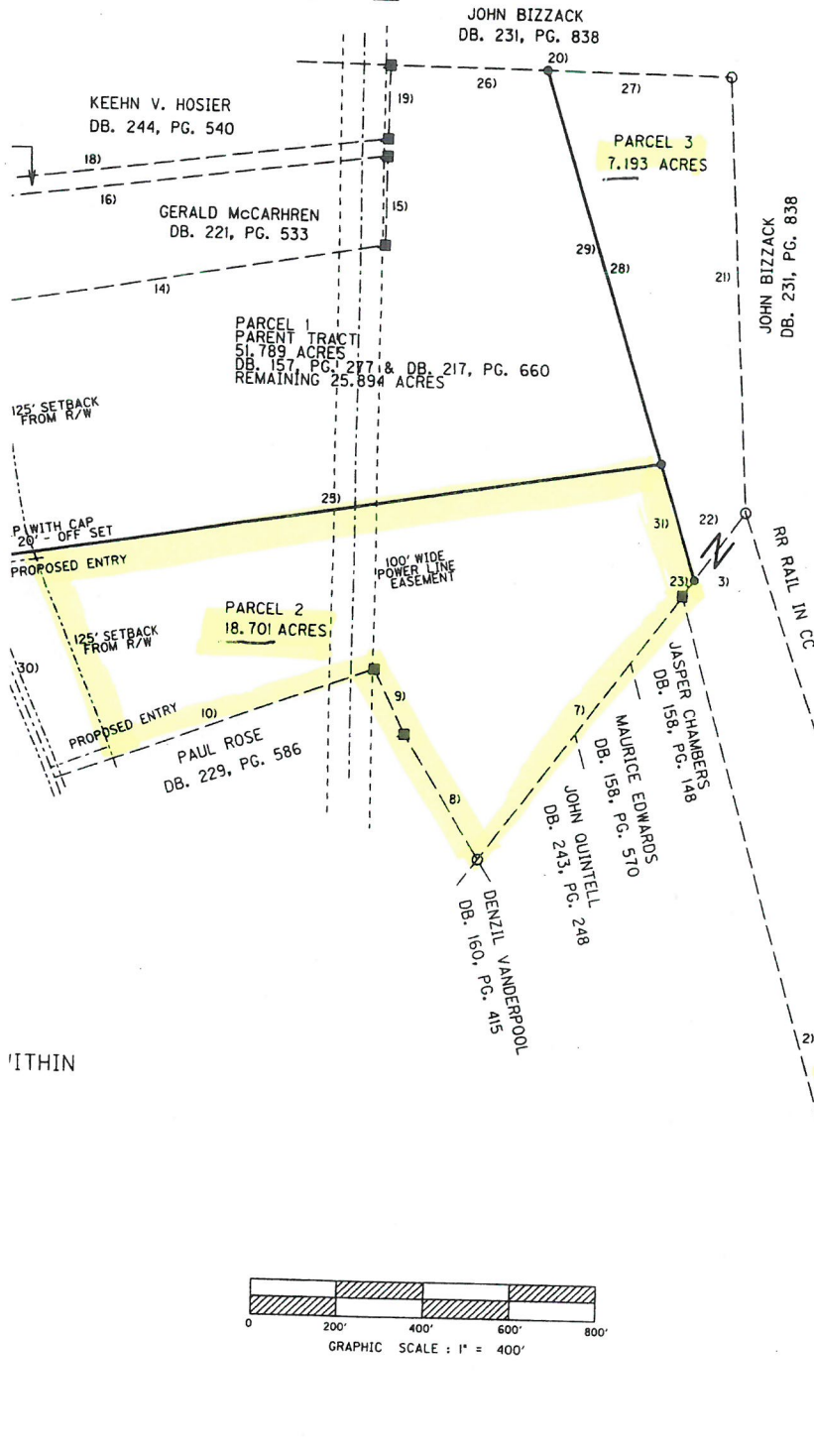
7.193 ACRES

3.47 ACRES

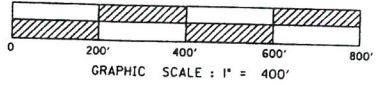
3.47 ACRES



- 2) N16° 07' 38" W, 1894.01'
- 3) N36° 44' 32" E, 242.510'
- 4) S19° 19' 30" E, 1719.31'
- 5) S70° 24' 41" W, 18.00'
- 6) S19° 35' 15" E, 324.53'
- 7) S36° 43' 22" W, 769.97'
- 8) N31° 44' 10" W, 335.10'
- 9) N26° 05' 38" W, 166.47'
- 10) S70° 06' 13" W, 787.97'
- 11) N21° 58' 04" W, 577.68'
- 12) N09° 54' 10" W, 313.00'
- 13) N09° 54' 09" W, 227.00'
- 14) N80° 19' 51" E, 1061.16'
- 15) N00° 17' 08" E, 204.31'
- 16) S82° 51' 57" W, 1106.76'
- 17) N11° 34' 45" W, 40.12'
- 18) N82° 51' 57" E, 1115.07'
- 19) N0° 17' 07" E, 168.57'
- 20) S89° 08' 37" E, 795.08'
- 21) S03° 31' 27" E, 1004.00'
- 22) S36° 44' 32" W, 196.17'
- 23) S36° 44' 32" W, 46.34'
- 24) N21° 58' 04" W, 38.90'
- 25) N80° 55' 48" E, 1614.67'
- 26) S89° 08' 37" E, 364.58'
- 27) S89° 08' 37" E, 430.50'
- 28) S17° 49' 30" E, 1224.51'
- 29) S17° 49' 30" E, 944.84'
- 30) N21° 58' 04" W, 538.78'
- 31) S17° 49' 30" E, 279.67'



- LEGEND
- FOUND IRON PIN
 - EXISTING FENCE CORNER
 - NEW PROPERTY LINE
 - SET IP W/ CAP PLS 2670
 - - - EXISTING PROPERTY LINE
 - - - EXISTING DRIVEWAY
 - POINT ON TANGENT



WITHIN

CERTIFICATE OF APPROVAL FOR RECORDING

I DO HEREBY CERTIFY THAT THE PLAT SHOWN AND DESCRIBED HEREON HAS BEEN FOUND TO COMPLY WITH THE REQUIREMENTS OF THE BOURBON COUNTY JOINT PLANNING COMMISSION AND THAT IT HAS BEEN APPROVED FOR RECORDING.